



BioCarbon
Laminates
Breathing Sustainability

CARBON NEUTRAL HIGH PRESSURE & SOLID GRADE LAMINATES

Taking steps to reduce your carbon footprint

CONTENTS

BioCarbon Laminates	1
A new range of laminates with built-in environmental protection	1
Carbon Neutral	2
Taking steps to reduce your carbon footprint	2
Our carbon neutral journey	2
How BioCarbon Laminates achieves a carbon neutral footprint	3
Service you can trust	4
Suitable for a wide range of industry sectors	5
BioCarbon High Pressure Laminate (HPL)	6
BioCarbon Solid Grade Laminate (SGL)	7
BioCarbon Liscio	8
Colour Chart	10
BioCarbon Laminates	10
BioCarbon Liscio	11
Trending colour matches and LRVs	12

BIOCARBON LAMINATES

A new range of laminates with built-in environmental protection

In a time when our conscience is becoming more environmentally focussed and our purchasing decisions and the impact that our choices can have on the planet is becoming more prominent, we are proud to introduce the first carbon neutral laminates to the UK and Ireland.

By producing verified documentation through a Life Cycle Analysis (LCA) and Environmental Product Declaration (EPD) from cradle-to-grave, we are able to openly share environmental data on the performance of the BioCarbon Laminates range.

Our laminates are produced in a carbon neutral manufacturing facility which monitors, controls and balances carbon emissions, reducing them to zero. Upon receipt of the materials, we then calculate the carbon emissions generated whilst handling BioCarbon Laminates and the delivery to our customers.

Through our carbon management programme, we offset the carbon emissions generated by investing in carbon credits to ensure a cleaner delivery of goods, achieving carbon neutral deliveries to site.



CARBON NEUTRAL

Taking steps to reduce your carbon footprint

We are passionate about taking positive steps to become Net Zero by 2030 and are playing our part to address the climate crisis. BioCarbon Laminates are designed to assist in this goal, supporting clients to become sustainable with carbon neutral laminates that meet the needs of every installation project.

Our carbon neutral journey

All products conform to CE mark standards of health and safety, make use of sustainable raw materials and are available as FSC® certified* materials.

With our passion to make a difference to the environment, we are on hand to support our customers who want to continue the carbon neutrality journey.

We do this by:



Engaging in carbon off-setting through the use of renewables including hydroelectric power



Exchanging VOC-emitting resin for a water-based alternative

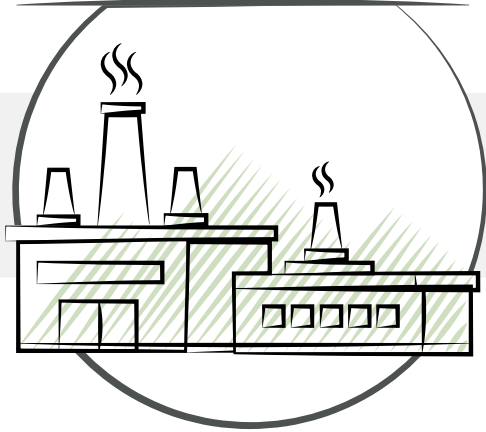


Countering CO₂ emissions with a reforestation tree-planting programme

OUR CARBON NEUTRAL FOOTPRINT

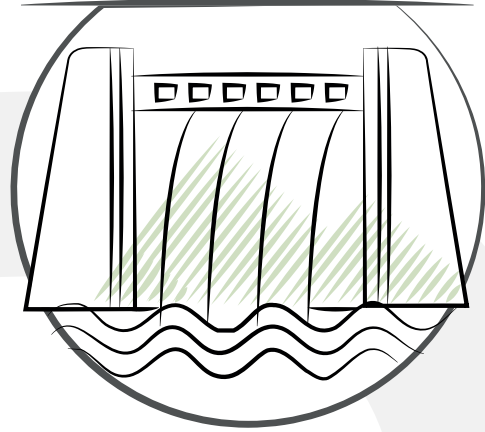
1. Manufacturing Processes

A focus on improving sustainability within our processes



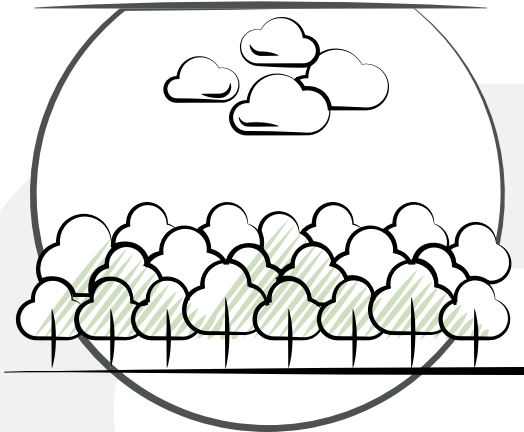
2. Energy Sources

Benefits of hydroelectric energy



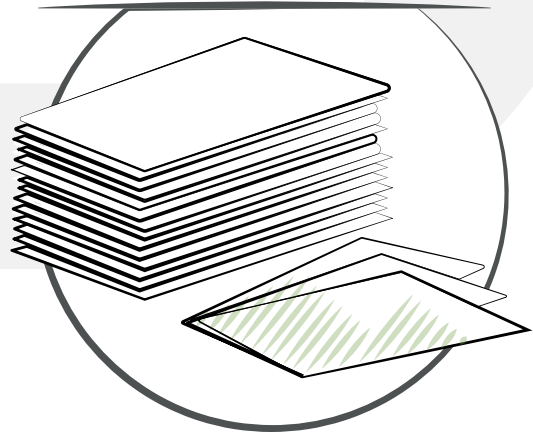
4. Carbon Offsetting

200 hectares of reforestation helps to absorb 440 tonnes of CO₂ per year



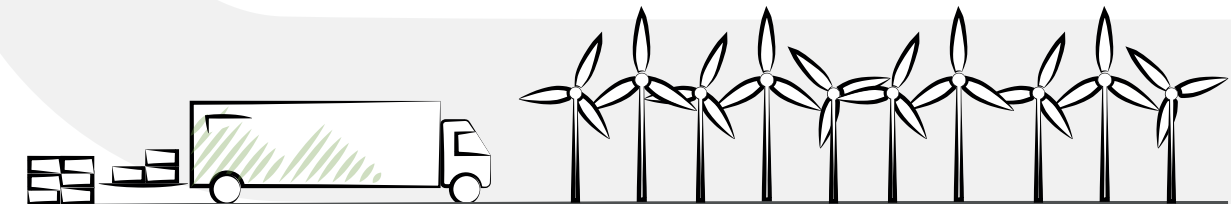
3. Materials

Continually focused on using renewable materials



5. Freight and Distribution

Investing in wind power



BioCarbon Laminates are Carbon Neutral supported by EcoAct

ecoact
an atos company

SERVICE YOU CAN TRUST

BioCarbon Laminates are happy to support your project from start to finish. We pride ourselves on the high quality of our product range and our commitment to excellent customer service.

01 | Distribution network across the UK

04 | Reliable and approachable service

02 | Sample requests dispatched within 48 hours

05 | Sheet optimisation recommendations

03 | Expert technical support and project advice

06 | Compliant with all relevant industry standards, regulations and certifications



SUITABLE FOR A WIDE RANGE OF INDUSTRY SECTORS

BioCarbon Laminates offer a wide range of solid colours, wood finishes, stones, marbles and attractive patterns. Strong, durable and non-porous, our laminates are suitable for applications across multiple sectors.



BIOCARBON HIGH PRESSURE LAMINATE (HPL)

HPL is suitable for high strength horizontal and vertical applications where resistance to impact and abrasions is required



Carbon Neutral



Anti-Bacterial and
Anti-Microbial
Protection



Formable



Moisture Resistant



Easy to Clean





BIOCARBON SOLID GRADE LAMINATE (SGL)

SGL is the best choice for high-traffic areas with heavy duty use. Its stain resistant properties and ability to withstand impact make this laminate the perfect choice for both horizontal and vertical applications.



Carbon Neutral



Fire Performance



Anti-Bacterial and
Anti-Microbial
Protection



High Resistance
to Impact



Moisture Resistant



Easy to Clean

BIOCARBON LISCIO

Liscio is defined by its distinctive soft touch, super matt surface and anti-fingerprint performance. Created using smart technology, any minor superficial scratches are repairable.



Carbon Neutral



Healing Properties



Low Light
Reflectivity



Anti-fingerprint



Soft Touch





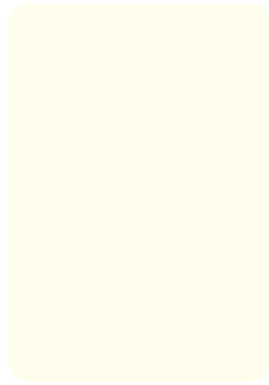
COLOUR CHART

Available in **W** Washroom and **L** Locker collections.



Arctic White | ES
BC115

W
HPL/SGL



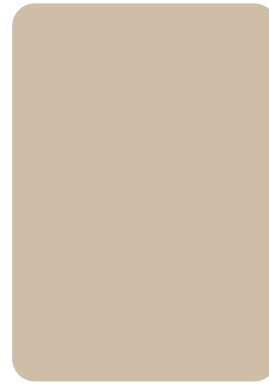
Egyptian White | ES
BC129

W L
HPL/SGL



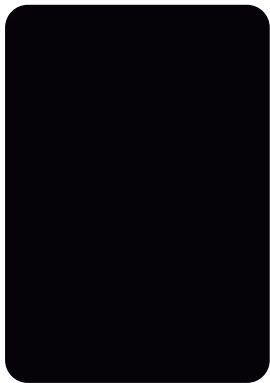
Antique White | ES
BC142

W
HPL/SGL



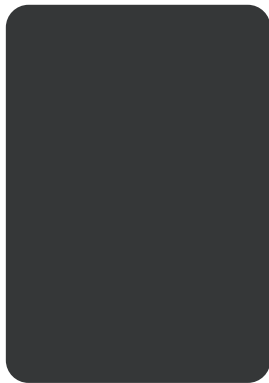
Truffle | ES
BC153

W
HPL/SGL



Jet | ES
BC223

W L
HPL/SGL



Graphite | ES
BC229

W L
HPL/SGL



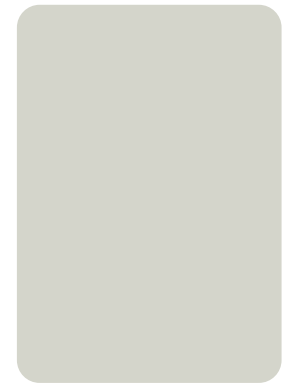
Elegant Grey | ES
BC259

W
HPL/SGL



Classic Grey | ES
BC264

W L
HPL/SGL



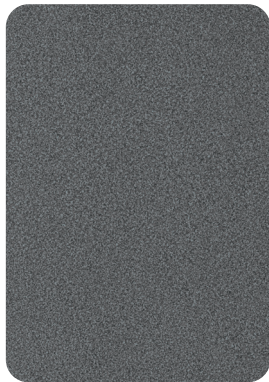
Luna Grey | ES
BC278

W
HPL/SGL



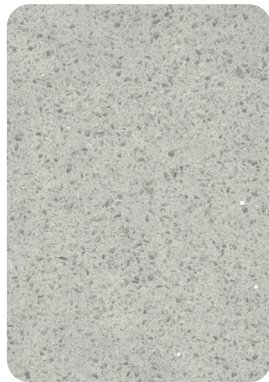
Andesite | ES
BC312

W
HPL/SGL



Gabbro | ES
BC342

W
HPL/SGL



Diamond Quartz | ES
BC369

W
HPL/SGL



Alluminio | ES
BC394

W
HPL/SGL



Azure | ES
BC425

W
HPL/SGL



Crimson | ES
BC466

W L
HPL/SGL



Orange | ES
BC469

W
HPL/SGL



Tropical | ES
BC478

W L
HPL/SGL



Lime | ES
BC499

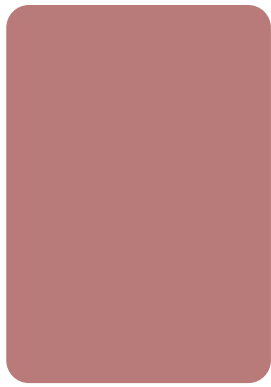
W L
HPL/SGL



Cobalt | ES
BC442

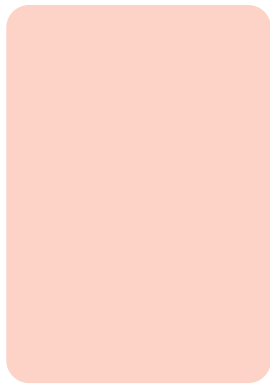
W L
HPL/SGL

BioCarbon Laminates reserve the right to change where necessary without consent or prior agreement the colours, specifications and sheet sizes etc., within the range. The samples displayed within this chart are for guidance only and actual samples are available. Contact our team to discuss your project requirements and the suitability of material selection.



Carmine | ES
BC501

W
HPL/SGL



Ballerina | ES
BC529

W
HPL/SGL



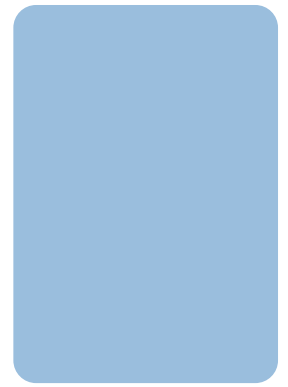
Sage | ES
BC551

W
HPL/SGL



Atoll | ES
BC559

W L
HPL/SGL



Sky | ES
BC584

W
HPL/SGL



Bog Oak | ES
BC620

W
HPL/SGL



Smoked Oak | ES
BC627

W
HPL/SGL



Royal Walnut | ES
BC646

W
HPL/SGL



English Oak | ES
BC670

W L
HPL/SGL



Country Oak | ES
BC688

W
HPL/SGL



Sawn Maple | ES
BC690

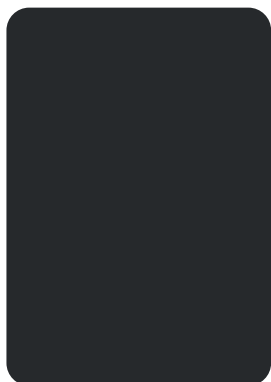
W
HPL/SGL



Washed Oak | ES
BC693

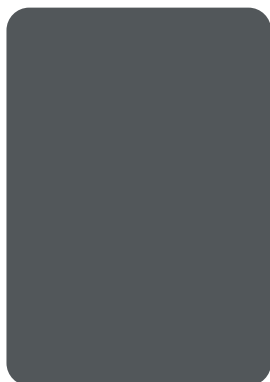
W
HPL/SGL

Liscio



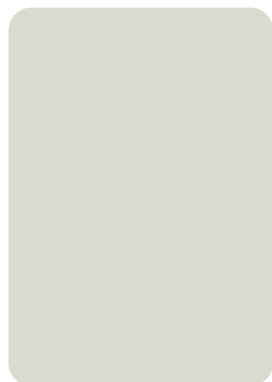
Nero | LS
BC709

W



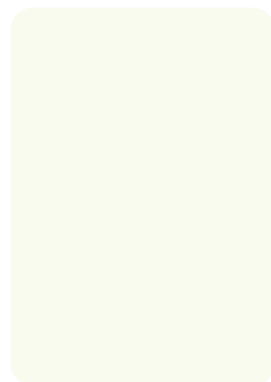
Carbone | LS
BC737

W



Fuma | LS
BC762

W



Bianca | LS
BC799

W

COLOUR MATCHES AND LRVs

CODE	DECOR	BS	RAL DESIGN*	NCS	PANTONE	LRV (D65/10)
BC115	Arctic White	22 B 15	-	S 0601- R	-	82
BC129	Egyptian White	-	100 93 05	S 0502-Y20R	-	83
BC142	Antique White	22 B 15	085 90 10	S 0505-Y30R	-	83
BC153	Truffle	-	060 80 10	S 3010 -Y30R	4755 C	41
BC223	Jet	00-E-53	000 15 00	S 9000 - N	Black C	4
BC229	Graphite	00 A 13	000 30 00	S 8000 - N	Cool Grey 11 C	8
BC259	Elegant Grey	BS381 626	000 65 00	S 4000 - N	422 U	34
BC264	Classic Grey	-	000 75 00	S 2500 - N	420 U	45
BC278	Luna Grey	10 A 03	000 85 00	S1502 - Y	420 U	64
BC312	Andesite	-	-	-	-	min: 2.96 max: 4.01 average: 3.57
BC342	Gabbro	-	-	-	-	min: 11.01 max: 12.57 average: 12.02
BC369	Diamond Quartz	-	-	-	-	min: 45.45 max: 50.99 average: 48.96
BC394	Alluminio	-	-	-	-	42.56
BC425	Azure	BS381 108	270 30 30	S 4550-R80B	Reflex Blue U	7
BC442	Cobalt	BS381 166	270 40 40	S 3560-R90B	2186 C	11
BC466	Crimson	04 E 56	030 40 60	S 1080 - R	199 U	14
BC469	Orange	-	050 60 70	S 1080-Y60R	Orange 021 C	24
BC478	Tropical	08 E 51	080 80 80	S 1080-Y10R	109 U	49
BC499	Lime	-	100 80 80	S 1060-G60Y	380 U	53
BC501	Carmine	BS381 454	020 60 20	S 3030 -R	500 U	27
BC529	Ballerina	02 C 33	040 90 10	S 0515-Y70R	705 C	71
BC551	Sage	-	160 60 10	S 4010-B90G	5565 U	30
BC559	Atoll	16 E 50	190 80 15	S 2020-B70G	7464 U	47
BC584	Sky	-	250 80 20	S 1030-R80B	2717 U	52
BC620	Bog Oak	-	-	-	-	7.73
BC627	Smoked Oak	-	-	-	-	min: 8.81 max: 10.02 average: 9.38
BC646	Royal Walnut	-	-	-	-	min: 5.72 max: 6.79 average: 6.36
BC670	English Oak	-	-	-	-	min: 9.63 max: 12.38 average: 11.58
BC688	Country Oak	-	-	-	-	30.4
BC690	Sawn Maple	-	-	-	-	min: 36.66 max: 39.31 average: 37.98
BC693	Washed Oak	-	-	-	-	44.64
BC709	Nero	00-E-53	000 20 00	S 8000 - N	Black C	4
BC737	Carbone	BS381 638	000 40 00	S 7002-N	2336 U	13
BC762	Fuma	10 A 03	000 80 00	S 1502-G50Y	2330 U	64
BC799	Bianca	-	110 96 02	S 0500 - N	-	93

The BS, RAL Design, NCS and Pantone references are the nearest equivalents and the LRV values have been measured in our testing laboratories and should be used for guidance only. We recommend decors should be verified visually by requesting a sample(s) to ensure true colour match to your project requirements.

*RAL Classic is available upon request.

BioCarbon
Laminates
Breathing Sustainability

+44 (0) 300 373 0091

support@biocarbonlaminates.com

www.biocarbonlaminates.com

BCL030423

